

Top Line
Automotive Engineering, Inc.

**AEROSPACE, MEDICAL & ENGINE
REMANUFACTURER –
COMPLETE FACILITY CLOSURE**

FEATURING: CNC Turning Centers, Vertical & Horizontal Machining Centers, Cylindrical & Surface Grinders, Vertical Mills, Band Saws, Inspection Equipment, Welding, Shot Blasting, Material Handling, Plant Support, Large Selection of Sunnen Equipment & More



5-TON/DAY

RADHE BIOMASS/COAL GASIFIER SYSTEM



2004

DAEWOO DMV3016D VERTICAL MACHINING CENTER



2002

HAAS HS-1RP HORIZONTAL MACHINING CENTER



2 AVAILABLE

BERCO RTM 270 CRANKSHAFT GRINDER

Sale Closing Date: Thursday, November 14 at 11:00 AM ET

Inspection: Wednesday, November 13 from 8:00 AM–4:00 PM ET or By Appointment

Sale Location: 2251 Topline Way, Brooksville, Florida 34604



PERFECTION
Industrial Sales

Perfection Industrial Sales
ph +1-847-545-6374 • fax +1-847-427-8884
www.perfectionindustrial.com

Online Bidding at www.perfectionindustrial.com

Sale is Being Held in Conjunction With:

 **Hilco**
Industrial

www.hilcoind.com • ph 877.37.hilco

GRINDERS, BORING MACHINES, HONES, RESURFACERS



TOYODA GU4-100 UNIVERSAL CYLINDRICAL GRINDER



BROWN & SHARPE 1236 MICROMASTER SURFACE GRINDER



SUNNEN CB-24000K LINE BORING MACHINE



SUNNEN CV-616-E CYLINDER KING VERTICAL HONE

GRINDERS

TOYODA GU4-100 UNIVERSAL CYLINDRICAL GRINDER, s/n RC7697, Toyoda GC32 CNC Control, 12.5" Swing Over Table, 39.4" Distance Between Centers, 11.8" Max. Grinding Dia., 8,500 RPM Wheel Speed

BERCO RTM 270B CRANKSHAFT GRINDER, s/n 214B, 72" Between Centers, Dual 7" 3-Jaw Chucks, Approx. 26" Wheel

BERCO RTM 270 CRANKSHAFT GRINDER, s/n 140B, 72" Between Centers, Dual 7" 3-Jaw Chucks, Approx. 26" Wheel

BERCO RAC 1500 CRANKSHAFT GRINDER, s/n 432B, 60" Between Centers, Approx. 16" Wheel

NORTON UNIVERSAL GRINDER, s/n C20917

BROWN & SHARPE 1236 MICROMASTER SURFACE GRINDER, s/n 523-1236-161, 6" x 36" Magnetic Chuck

BORING MACHINES

SUNNEN CB-24000K LINE BORING MACHINE, s/n 1P1 1066, 9" Side of Head to Bearing Centerline, 1-3/4" to 9-3/4" Head Surface to Bearing Centerline

ROTTLER F-85 CYLINDER BORING MACHINE, s/n 18024, Dual Table, CNC Control



SUNNEN HBS-2100D HEAD AND BLOCK RESURFACER



2 AVAILABLE

BERCO RTM 270 CRANKSHAFT GRINDER



BERCO RAC 1500 CRANKSHAFT GRINDER

HONES

SUNNEN CV-616-E CYLINDER KING VERTICAL HONE, s/n 2T1-4434

SUNNEN CV-616 CYLINDER KING VERTICAL HONE, s/n 2T1-4445

(2) **SUNNEN LBB-1810-D HONES**

RESURFACERS

SUNNEN HBS-2100D HEAD AND BLOCK RESURFACER, s/n 4N1 1012, 14" x 48" Table Area, 89" x 14" Work Area, 72-800 RPM, 59" x 14.25" Max. Machining Surface

WINONA VAN NORMAN 86 2216 RESURFACER, s/n 1431495, 18" Chuck, Approx. 6" Wheel, 5 HP

PETERSON RG 28 RESURFACER, s/n 6/74, 26.5" x 10.5" Table, 3" Slot in Table, Approx. 12" Dia. Wheel Capacity

To discuss your requirements for an auction, please call Perfection Industrial **847.427.3333**



ROTTLER F-85 CYLINDER BORING MACHINE



2 AVAILABLE

SUNNEN LBB-1810-D HONES

Online Bidding at www.perfectionindustrial.com

View our current auction schedule at www.perfectionindustrial.com

GUIDE & SEAT MACHINE, CRANKSHAFT BALANCER, CNC MACHINING CENTERS, CNC TURNING CENTERS



STEWART-WARNER 2000 CRANKSHAFT BALANCER



GUIDE & SEAT MACHINE

SUNNEN VGS-20 GUIDE AND SEAT MACHINE, s/n 2T1-2135

CRANKSHAFT BALANCER

STEWART-WARNER 2000 CRANKSHAFT BALANCER, s/n E00103, 500 Lb Capacity

CNC MACHINING CENTERS

TSUGAMI FMA5-II CNC HORIZONTAL MACHINING CENTER, s/n 3512, w/Fanuc MC1 CNC Control, 22"-X, 13.8"-Y, 19.7"-Z, 11.75" x 11.75" Pallets, 40 Taper, 40-10,000 RPM, (10) Pallet Positions, Comes w/(7) Pallets

SUNNEN VGS-20 GUIDE AND SEAT MACHINE

2002 HAAS HS-1RP CNC HORIZONTAL MACHINING CENTER, s/n 51182, (2) 16" x 16" Pallets, 40 Taper, 30 HP Vector Drive, 8,000 RPM, 24 ATC, 24"-X, 20"-Y, 20"-Z, 500 Lb Max. Pallet Load, 710 IPM Rapid Traverse X/Y/Z

2004 DAEWOO DMV3016D CNC VERTICAL MACHINING CENTER, s/n AV4E 0343, Fanuc I Series CNC Control, 18" x 39" Table, 40 Taper, 20 ATC, 32"-X, 16"-Y, 20"-Z, 1,181 IPM Rapid Traverse X/Y/Z

2000 HAAS VF-3 CNC VERTICAL MACHINING CENTER, s/n 20173, HAAS CNC Control, 18" x 48" Table, 40 Taper, 20 ATC, 20 HP Vector Drive, 40"-X, 20"-Y, 25"-Z

SHARNOA HPM20 CNC VERTICAL MACHINING CENTER, (Control Needs Monitor), 16 ATC, 15" x 25.5" Table, BT 40 Taper



TSUGAMI FMA5-II HORIZONTAL MACHINING CENTER



HAAS HS-1RP HORIZONTAL MACHINING CENTER



DAEWOO DMV3016D VERTICAL MACHINING CENTER



HAAS VF-3 CNC VERTICAL MACHINING CENTER

CNC TURNING CENTERS

(2) HARDINGE CONQUEST T51 CNC TURNING CENTERS, s/n CL-318-C and CL-317-C, Fanuc OTC CNC Control, Royal 5C Collet Chuck and 8" 3-Jaw Chuck, 12-Position Turret, 2" Bar Capacity, 2-Axis, 31" Swing, 24" Turning Dia., 20" Machining Length, Tailstock, 3,400 RPM

(2) HARDINGE CONQUEST T42 CNC TURNING CENTERS, s/n SG-845-B and SG-691, Fanuc 18-T CNC Control, 21.2" Swing, 13.1" Machining Length, 1.625" Bar Capacity, 9" Turning Dia., 5,000 RPM, 12-Position Turret, Tailstock, Chip Conveyor

TAKISAWA EX-108 CNC TURNING CENTER, Fanuc 21i-T CNC Control, 8" 3-Jaw Chuck, 12-Position Turret, Tailstock, 2" Bar Capacity, 15.75" Swing, 12.6" Turning Dia., 20.87" Machining Length

CINCINNATI MILACRON CINTURN 8C SERIES 1208 CNC CHUCKER, s/n 5320308, Acramatic 850 CNC Control, 8" 3-Jaw Chuck, 6-Position Turret

CINCINNATI MILACRON CINTURN 12U CNC TURNING CENTER, s/n 5305U1276-008, Acramatic 850SX, 12" 3-Jaw Chuck, 7-Position Upper Turret, 7-Position Lower Turret, (Control Missing Monitor)

(2) HARDINGE SUPER PRECISION CNC TURNING CENTERS, Centroid T39S CNC Control, s/n 2245, Collet Chuck, 8-Position Turret

(2) IEMCA BAR FEEDS



HARDINGE CONQUEST T51 CNC TURNING CENTER



HARDINGE CONQUEST T42 CNC TURNING CENTER

SHARNOA HPM20 VERTICAL MACHINING CENTER



TAKISAWA EX-108 CNC TURNING CENTER



CINCINNATI MILACRON CINTURN 8C CNC CHUCKER



HARDINGE SUPER PRECISION CNC TURNING CENTER



IEMCA BAR FEED

CONVENTIONAL LATHES, CONVENTIONAL MACHINE TOOLS, BLAST SYSTEMS, GASIFIER & OXIDATION SYSTEMS



2006

SHARP 1660L LATHE



2 AVAILABLE

ENCO FTS-27 LATHE

CONVENTIONAL LATHES

2006 SHARP 1660L LATHE, s/n 5006213, 16" Swing Over Bed, 24" Swing Over Gap, 8-3/4" Swing Over Cross Slide, 60" Distance Between Centers, 10" 3-Jaw Chuck, 2,000 RPM

TOOLMEX FAMOT/PLESZEW TUM35D1 LATHE, s/n 2332, 14" Swing Over Bed, 8" Swing Over Carriage, 40" Between Centers, w/8" 4-Jaw Chuck and 6" 3-Jaw, Acu-Rite Master TP DRO, Dorian Tool Post

AFM TUG-40/80 LATHE, s/n 0881-2646, 16" 4-Jaw Chuck, 18-1,600 RPM Tool Post, Steady Rest

(2) ENCO FTS-27 SECONDARY OPERATION LATHES, s/n 701123, Collet Chuck, 6-Position Turret, 230-3,500 RPM, w 6" 3-Jaw Chuck

CONVENTIONAL MACHINE TOOLS

MOORE G18 JIG GRINDER, s/n G3070, 11" x 24" Table, 18" Longitudinal Table Travel, 11" Cross Table Travel, 40-250 RPM

PRATT & WHITNEY NO. 2A JIG BORER, s/n 22599, 22" x 44" T-Slotted Table

CLAUSING KONDIA FV-1 CNC VERTICAL MILL, s/n S-297, DynaPath System Delta 20 CNC Control, 60-4,000 RPM, 12" x 42" T-Slotted Table

BRIDGEPORT 2 HP VERTICAL MILL, s/n 271791, Acu-Rite DRO, Bridgeport 8F 9" x 48" Power Feed Table

(2) BRIDGEPORT SERIES 1 VERTICAL MILLS, s/n 183451, 9" x 42" T-Slotted Table, 1.5 HP

DOALL FV-2V VERTICAL MILL, s/n 80-2408, 12" x 49" T-Slotted Table, 60-4,350 RPM, 3 HP

VECTRAX GS-16V VERTICAL MILL, s/n 863010, Acu-Rite DRO, 70-4,200 RPM, 9-49" Power Feed Table

BRIDGEPORT DUAL HEAD GANG MILL, s/n NA, (2) Bridgeport Mill Heads, (1) Tru-Trace 1110 Tracer Head, 9" x 60" Table, 60-4,200 RPM

BROWN & SHARPE NO. 13 UNIVERSAL TOOL AND GRINDING MACHINE, s/n 525-13-2150

2006 COSEN C-300NC HORIZONTAL BANDSAW, s/n C941328, 5 HP



BRIDGEPORT SERIES 1 MILL

2 AVAILABLE

Sale Closing Date:
Thursday, Nov. 14 at 11:00 AM ET



2006

COSEN C-300NC HORIZONTAL BANDSAW



5-TON/DAY

RADHE BIOMASS/COAL GASIFIER SYSTEM



FISCHER TROPSCH LAB



MOORE G18 JIG GRINDER



CLAUSING KONDIA FV-1 CNC VERTICAL MILL



GOFF 48" TABLE TYPE BLAST SYSTEM



GOFF TUMBLER TYPE BLAST SYSTEM

BLAST SYSTEMS

GOFF 48" TABLE TYPE BLAST SYSTEM, s/n 154-50-431, 48" Dia. Table

GOFF TUMBLER TYPE BLAST SYSTEM, s/n NA, 22" Dia. x 31"W Work Area

GOFF 3BB BLAST SYSTEM,

s/n 153-50-411, 22" Dia. x 31"W Work Area

GASIFIER & OXIDATION SYSTEMS

RADHE COAL GASIFIER SYSTEM, Top Fed, Up-Draft Design, 20-50mm Fuel Size or Biomass Briquette, 5-Ton Per Day Capacity, (Please contact auctioneer for more information on this system.)

FISCHER TROPSCH LAB, Used for Plasma Partial Oxidation of Natural Gas or Coal Gasification, Syngas Compressor, Underground Storage Tanks, Coolant Pump, Coolant Oil and Heat Exchanger, PLC Controls, Non-Thermal Plasma Fuel Reformer, (Please contact auctioneer for more information on this system.)



To discuss your requirements for an auction, please call Perfection Industrial **847.427.3333**

FORKLIFTS & MATERIAL HANDLING, AIR COMPRESSORS, INSPECTION EQUIPMENT & MORE



JLG LIFT 45 ELECTRIC TELESCOPING BOOM LIFT



23,200 LB

TRAVERSE LIFT TL6035 DIESEL TELEHANDLER



13,000 LB

DAEWOO D60 DIESEL FORKLIFT



2003

FARM PRO 2425 4WD TRACTOR



25,000 LB

TOWMOTOR AM25 LP FORKLIFT



SNORKEL SCISSOR LIFT



ASSORTED COMPARATORS AND GRANITE SURFACE PLATES

INSPECTION EQUIPMENT

MITUTOYO BHN706 CMM, s/n A9107002, Renishaw PH9MK2 Probe

SCHERR TUMICO P-2500 OPTICAL COMPARATOR, s/n 233

MICRO VU CENTURY 201 OPTICAL COMPARATOR, s/n 475, w/Micro Vu Q16 Computer

ALSO: HARDNESS TESTERS, DYNAMETERS, BALANCERS, MICROMETERS, MICROSCOPES, CALIPERS, GAGES

ALSO AVAILABLE

SURFACE GRINDERS, PEDESTAL GRINDERS, GANG DRILLS, DRILL PRESSES, HORIZONTAL MILLS, BANDSAWS, HYDRAULIC PRESS, WELDERS AND WELDING SUPPLIES, VIBRATORY FINISHERS, VIDMAR TOOL CABINETS, LARGE ASSORTMENT OF 40 TAPER TOOL HOLDERS, BORING BARS, HIGH SPEED END MILLS, TWIST DRILLS, CHUCKS, SURFACE PLATES, SHOP CARTS, FILE CABINETS, WORK BENCHES



PEDESTAL GRINDERS



ASSORTED WELDERS



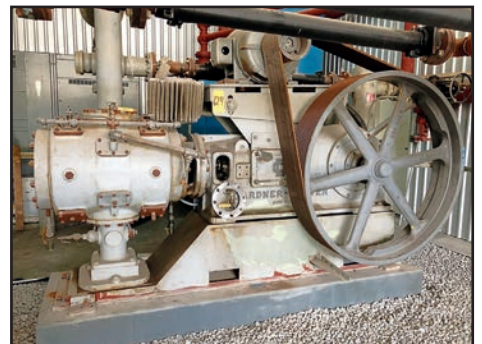
SCHERR TUMICO P-2500 OPTICAL COMPARATOR



LARGE QUANTITY OF TOOLING



BALL BEARING TOOL CABINETS



GARDNER DENVER R-12-DZ AIR COMPRESSOR



MITUTOYO BHN706 CMM

View our current auction schedule at www.perfectionindustrial.com

To discuss your requirements for an auction, please call Perfection Industrial **847.427.3333**

TERMS OF SALE

An 18% buyer's premium will be charged on all assets. The buyer's premium will be reduced to 16% for payments made by means of cashier's check or wire transfer within 48 hours of sale close. If paying by company check, a paid in full invoice will be issued upon the check clearing. Credit card payments are limited to a maximum of \$2,000. All items are sold "As is, Where is" without any warranty, express or implied.

FOR FURTHER INFORMATION

For further information contact Jennifer Reiner at +1-847-545-6374 or jennifer@perfectionindustrial.com. For accounting and invoicing questions, contact Inesa Dicipetris at +1-847-427-3333 or inesa@perfectionindustrial.com.

REMOVAL

All small/hand-carry items must be removed no later than Friday, November 22. All machines must be removed no later than Friday, December 13. Removal hours are Monday through Friday, from 8:00 AM to 4:00 PM ET. Extended hours and weekends may be accommodated with prior appointment. Anyone removing purchased items with a lift truck or another powered vehicle must have a certificate of insurance with a \$2M General Liability policy, and that certificate must be provided to the auctioneer for review and approval prior to the auction.

Sale Closing Date: Thursday, November 14 at 11:00 AM ET

Inspection: Wednesday, November 13 from 8:00 AM-4:00 PM ET or By Appointment

Sale Location: 2251 Topline Way, Brooksville, Florida 34604



PERFECTION Industrial Sales

Online Bidding at www.perfectionindustrial.com

Perfection Industrial Sales
ph +1-847-545-6374 • fax +1-847-427-8884
www.perfectionindustrial.com

Sale is Being Held in Conjunction With:

Hilco Industrial
www.hilcoind.com • ph 877.37.hilco